

Another Bambeck Auctioneers Inc.

AUCTION

By Order of Secured Party - Business Closed



Komo VR 510 Mach III CNC Router

Machinery & Equipment Of:

Designer Showcases, Inc.

2811 Carquest Dr.

BRUNSWICK OH 44212

(See Directions on Back)

***Woodworking Machinery
Material Handling Equipment
Warehouse Equipment***



IMA Novimat Concept L 4325 Edgebander



1 of 3 Toyota Lift Trucks

**Wednesday, June 8
Beginning @ 10:00 AM**

Auction Managed & Conducted By:

BAMBECK AUCTIONEERS
I N C O R P O R A T E D

auctioneers • real estate brokers • appraisers

3061 Steel Road NW, Dover, Ohio 44622 • (330) 343-1437

www.bambeck.com

Bid Live On-Site or Online @:

BidSpotter.com™
Live Interactive Auction Webcasts!

AUCTION:

Designer Showcases Inc.

CNC PANEL SAW - CNC ROUTERS

Giben CNC panel saw, Model Prisma.2.SP, s/n 653.01.450

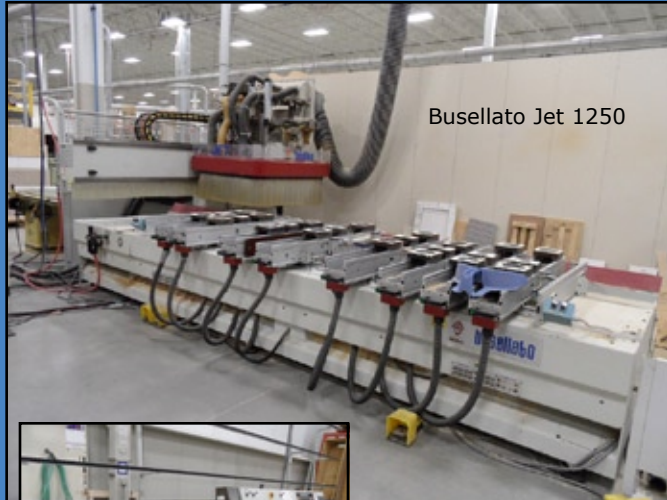
Komo CNC router, Model VR 1205TT Mach II S, s/n 52227-07-01-05 (2005)

Komo CNC router, Model VR 510 Mach III, s/n 34973-03-01-01 (2001)

Busellato CNC router, Model Jet 1250, s/n 4368 (1998)



Komo VR 1205TT



Busellato Jet 1250



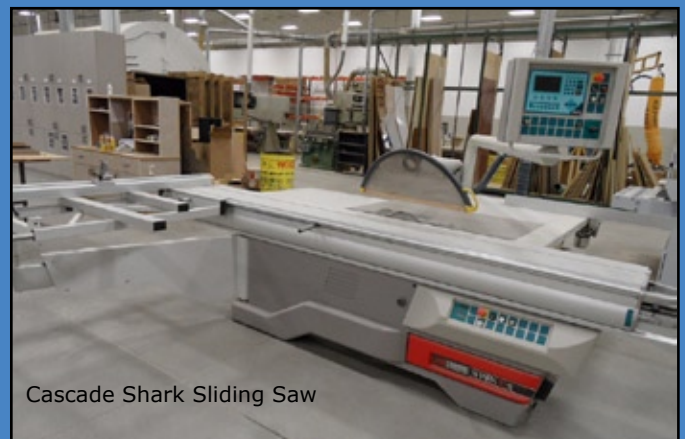
Schiatti Angelo Glass Edger



Triulzi Glass Washer



Weinig Moulder



Cascade Shark Sliding Saw

EDGE BANDER - GLASS MACHINES:

IMA Novimat Concept L 4325 edgebander, s/n 10556 (2004)

Schiatti Angelo FPS SME 10 glass edging machine, s/n 70 (2003)

Triulzi VOT 1300 4.1.2 vertical glass washer, s/n DOT-60103 (2003)

2811 CARQUEST DR.
BRUNSWICK OH 44212

WEDNESDAY • JUNE 8
STARTING AT 10:00 A.M.



1 of 4 Altendorf Sliding Saws
Cascade R/63H3 Planer



1 of 2 Anver Vacuum Lifts

MOULDER - WIDE BELT SANDER:

Weinig Profimat 23E throughfeed moulder, s/n 84020 (1998)

Butfering Optimat SKO 213 RC wide belt sander, s/n 0411490699 (2005)

SLIDING TABLE SAWS:

Altendorf F45 Elmo OE sliding table saw, s/n 00-07-41 (2000)

Altendorf F45 sliding table saw, s/n 87-10-177

(2) Altendorf WA8 sliding table saws, s/n's: 05-06-684; 05-08-658 (2005)

Cascade Shark sliding table saw, s/n 02-K1-071 (2002)



1 of 5 Powermatic Table Saws



Diehl 15 hp Rip Saw



OMGA Dual Miter Saw

www.bambeck.com

AUCTION:



1 of 2 Quincy Vacuum Pumps

RACKING - OTHER ITEMS:

Approximately 1,500 linear feet of steel racking consisting of 42"x12' & 42"x14' uprights and 9', 10' & 12' stepped beams (will be sold in varying quantities)

(2) 11'W x 14'H double-sided cantilever racks • **(2)** 5' x 12' single-side cantilever racks

Equipto 12'x12'x9'H steel mezzanine (150 lb./sq.ft.) w/ stairs, safety railing & shop-built modular office

(2) Anver vacuum lifts, Model VT250-2.5=D9, w/ Spanco crane, 250 lb. capacity

(3) Southworth 6,000 lb. capacity scissor lift platforms, 4'x8'

Cleveland B3VC vertical CNC bed-type milling machine, s/n 339, 10"x48" table, Centroid M-15 control

Large assortment raw materials, hardware, work-in-process

OTHER WOODWORKING MACHINERY:

Diehl ESL 20II rip saw, 15 hp, s/n 98-6431-5847 (1998)

Cascade R/63H3 planer, s/n 01-64-063 (2001)

Scan Hugger wood waste shredder, 22 kw motor, Type HL 3 10 12, Machine No. 8109 97

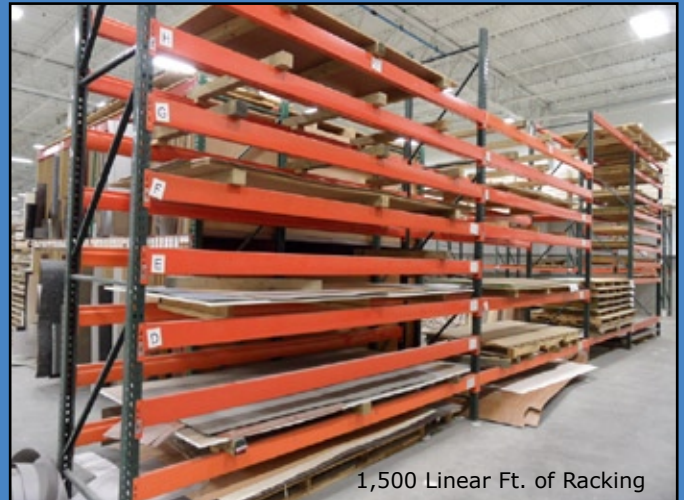
(3) Powermatic Gold Series 66-TA table saws w/ 4' saw fence • **Powermatic** 72 table saw, 4' fence • **(2) Powermatic** 66 table saws w/ 4' saw fence • **Powermatic / SAC** FS430 14" jointer, s/n 8779123 • **(3) Powermatic** Gold Series 6" jointers, Model 054A

OMGA TR 2B N "NC" dual miter saw • **(3) OMGA** 12" miter saws w/ mobile dust collection base

SCMI T110 A shaper, s/n AB 24221 • **Meber** SR600 vertical band saw

Oakley H6 edge sander, s/n 5026 • **Original** radial arm saw

Virutex CO 49K laminate cutter • **Evans** 5010 laminate cutter



1,500 Linear Ft. of Racking



Portable Mezzanine w/ Office



Powermatic / SAC Jointer

VACUUM PUMPS - AIR COMPRESSORS:

Quincy QSV-25 vacuum pump, s/n UN052046 (2005) • **Quincy** QSVI50ANN3E vacuum pump, s/n 910963

Quincy QMB25ACA22SF rotary screw air compressor, s/n 87213, 10848 hrs. on meter • **Quincy** QR5120ST00120 horizontal tank air compressor, 25 hp, s/n 5136595 • **Kaeser** TC31 air dryer • **Quincy** Q1FD air dryer

BAMBECK AUCTIONEERS

I N C O R P O R A T E D

auctioneers • real estate brokers • appraisers

3061 Steel Road NW, Dover, Ohio 44622 • (330) 343-1437

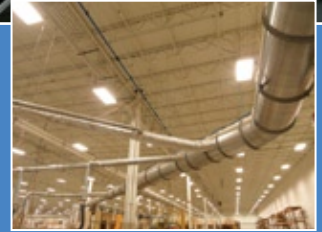
**INSPECTION - TUESDAY
JUNE 7 • 9AM-4PM**

DUST COLLECTION SYSTEM:

Baghouse Dust Collection System - 2002 New York blower, 100 hp 34,000 cfm fan, large bag house w/ 24-valve air pulse, bottom discharge auger, clamp-type duct work w/ 2002 Ecogate Power Master EG1100 & Ecogate GreenBox Master EG102 computerized gate system (30 motorized gates), Flamex FMZ4100 GAB6 Minimax spark detection system.



1 of 3 Toyota Lift Trucks



Dust Collection System

MAKOR FINISH LINE - SPRAY BOOTHS:

Makor Spray Finish Line consisting of: Makor LC/4 sander, s/n 8329 (2002); Makor TE3000 transfer conveyor; Makor CSP/6 spray station, s/n 7963 (2000); Makor ACA 4 finish stacker, s/n 6935 (2002). Designed for painting strips of wood and wood derivatives or plastic and plastic derivatives - exclusively for spraying of polyurethane, nitro and water based paints.

(2) **Col-Met** EMD 26 SB spray booths, 14'x26'x9'H ID, 15'x26'x11'H OD, 9'x9' opening (doors)



Makor Finish Line



1 of 2 Spray Booths

FORK LIFTS - AERIAL WORK PLATFORMS:

Toyota 7FGU30 LP-gas fork lift, s/n 66768, 5,500 lb. cap., 187" lift height, side shifter, solid cushion tires, 1976 hrs. on meter • **Toyota** 52-6FGCU30 LP-gas forklift, s/n 61424, 5,500 lb. cap., 187" lift ht., side shifter, solid tires, 4626 hrs. on meter • **Toyota** 7FBEU20 battery-operated fork lift, s/n 13242, 3450 lb. cap., 189" lift ht., side shifter

JLG 3246 ES Pro-Lift Series aerial work platform, s/n 0200154366 (2006), battery-operated • **JLG** 1932 E2 aerial work platform, s/n 0200070086, battery-operated



Scan Huger Waste Wood Shredder